
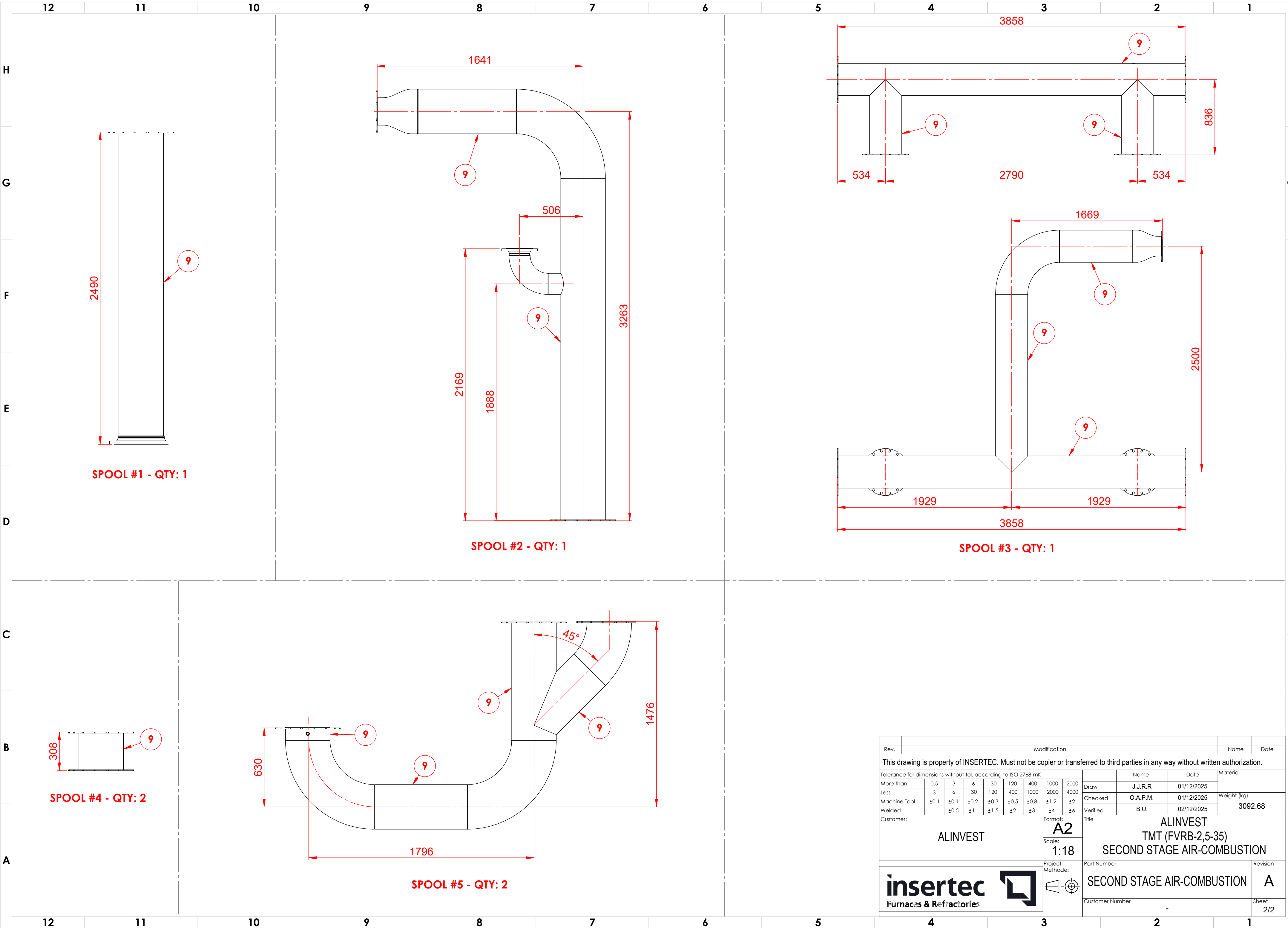

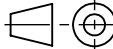


20	NUT DIN 934 M24-A4-80	A	NUT M24	A4			0.1	176	17.6
19	DIN127-M24-A4	A	WASHER M24	A4			0.03	176	5.28
18	DIN125-M24-A4	A	WASHER M24	A4			0.03	352	10.56
17	DIN933-M24X110-A4-80	A	BOLT M24X110	A4			0.53	144	76.32
16	DIN933-M24X65-A4-80	A	BOLT M24X65	A4			0.37	32	11.84
15	NUT DIN 934 M20-A4	A	NUT M20	A4			0.06	8	0.48
14	DIN127-M20-A4	A	WASHER M20	A4			0.02	8	0.16
13	DIN125-M20-A4	A	WASHER M20	A4			0.02	16	0.32
12	DIN933-M20x100-A4-80	A	BOLT M20X100	A4			0.33	8	2.64
11	DIN 2690		GASKET - KLINGERSIL C-4430 - 3 THK. - DN350	FIBERGLASS W/NBR				16	0
10	DIN 2690		GASKET - KLINGERSIL C-4430 - 3 THK. - DN200	FIBERGLASS W/NBR			-	2	0
9	EN 10217-7 - SS316L		TUBE 14" - 5 THK - WELDED PIPE	AISI 316L			0	19657mm	0
8	EN 10217-7 - SS316L		TUBE 6" - 4.5 THK - WELDED PIPE	AISI 316L			0	121mm	0
7	PID 560	-	THERMOCOUPLE TYPE K, 1 X NICRNI, NOMINAL LENGTH = 250 MM. EXECUTION WITH REPLACEABLE GAUGE SLIDE. PROTECTION TUBE Ø 10 X 1 MAT. 1.4541, CONNECTION HEAD FORM B. WITH CABLE CONNECTION M 20 X 1,5	COMMERCIAL			3.42	2	6.84
6	PID 410		SPECIAL EXECUTION; MAX. OPERATING TEMP.: UP TO 350°C TOTAL LENGTH: 265 MM, EXTENSIBILITY: AX. 23 MM / LAT. 9 MM; PN10.	COMMERCIAL			80.66	2	161.32
5	PID 380&650		BUTTERFLY VALVE FOR INSTALLATION BETWEEN 2 FLANGES DN350, INCL. STEP SEAT SEALING FOR AIR / WASTE GAS 450°C, WITH PNEUMATIC ACTUATOR, SINGLE-ACTING, OPEN/CLOSE IN 1 SECOND 5 BAR COMPRESSED AIR WITH 3/2-WAY SOLENOID VALVE 24VDC LEAKAGE APPROX. 0,02% OF KV 90°, PN 10, INCL. POSITION SWITCH 24VDC OPEN/CLOSE, 2-WIRE	COMMERCIAL			38.18	2	76.36
4	PID 350&635		BUTTERFLY VALVE FOR INSTALLATION BETWEEN 2 FLANGES DN 350 PN 10 FOR AIR, WITH HANDLE	COMMERCIAL			25.71	2	51.42
3	PID 340	-	CONTROL BUTTERFLY VALVE FOR INSTALLATION BETWEEN 2 FLANGES DN 200 PN 10 FOR AIR AND NATURAL GAS JASTA GD6, DVWG CERT. COMPLETE ASSEMBLED WITH PNEUMATIC ACTUATOR, OPEN/CLOSE IN 3 - 5 SECONDS MAX. AND SIEMENS SIPART PS 2, TYPE: 6DR5010-0NG01-0AA0-Z C20, 4-20 MA IN- AND OUTPUT, 24VDC	COMMERCIAL			28.80	1	28.8
2	PID 310		MEASURING ORIFICE FOR AIR, INSTALLATION BETWEEN FLANGES DN350, V= 5200 NM3/H, PE= 90 MBAR, DIFFERENTIAL PRESSURE : 15 MBAR	COMMERCIAL			9.31	1	9.31
1	PID 1100&1101		COMPENSATOR 14" - DN350 - A121 - 600 LENGTH	COMMERCIAL			70.41	1	70.41
Nº	PART NUMBER / ARTICLE CODE	RE V.	DESCRIPTION	MATERIAL	MANUFACTURER	TAG	WEIGHT (KG)	QTY.	TOTAL WEIGHT (KG)

Rev.		Modification										Name		Date		
This drawing is property of INSERTEC. Must not be copied or transferred to third parties in any way without written authorization.																
Tolerance for dimensions without tol. according to ISO 2768-mK											Name		Date		Material	
More than		0.5	3	6	30	120	400	1000	2000	Draw		J.J.R.R		01/12/2025		Weight (kg)
Less		3	6	30	120	400	1000	2000	4000	Checked		O.A.P.M.		01/12/2025		
Machine Tool		±0.1	±0.1	±0.2	±0.3	±0.5	±0.8	±1.2	±2	Verified		B.U.		02/12/2025		
Welded			±0.5	±1	±1.5	±2	±3	±4	±6	3092.68						
Customer:									Format:		Title		ALINVEST TMT (FVRB-2,5-35) SECOND STAGE AIR-COMBUSTION			
ALINVEST									A2							
									Scale:							
									1:19							
Project Methode:									Part Number		Revision					
									SECOND STAGE AIR-COMBUSTION		A					
Customer Number									-		Sheet					
											1/2					



Rev.		Modification								Name		Date
This drawing is property of INSERTEC. Must not be copier or transferred to third parties in any way without written authorization.												
Tolerance for dimensions without tol. according to ISO 2768-mK										Name	Date	Material
More than	0.5	3	6	30	120	400	1000	2000	Draw	J.J.R.R	01/12/2025	
Less	3	6	30	120	400	1000	2000	4000	Checked	O.A.P.M.	01/12/2025	Weight (kg) 3092.68
Machine Tool	±0.1	±0.1	±0.2	±0.3	±0.5	±0.8	±1.2	±2	Verified	B.U.	02/12/2025	
Welded		±0.5	±1	±1.5	±2	±3	±4	±6				
Customer:									Format:		Title	
ALINVEST									A2		ALINVEST TMT (FVRB-2,5-35) SECOND STAGE AIR-COMBUSTION	
									Scale: 1:18			
									Project Methode:		Revision	
											A	
									Part Number			
									SECOND STAGE AIR-COMBUSTION			
Customer Number									-		Sheet 2/2	